



Riverside opened to the public in October of 1993 with the restoration of the 1837 historic Farnsley-Moremén House and the dedication of the Visitors Center.

Today, the 300-acre historic site includes an open-air pavilion (adjacent to the Visitors Center), a reconstructed detached kitchen (near the historic house), the 1888 historic Moremén Family Chapel (renovated and opened in 2013) now used as a wedding rental venue--and site for special events and public programs. Riverside also features a historic kitchen garden, the formal Jeanne Montgomery Garden, and a large community garden where people from the area can rent space to grow their own food.

Since 1993, Riverside has welcomed hundreds of thousands of visitors from far and wide, many of them school children who have taken part in our award-winning archaeology and hands-on history field trips. Visitors come to tour the historic Farnsley-Moremén House, walk the grounds, or explore the Louisville Loop which runs through the site.

Riverside hosts several annual community events: a popular Ice Cream Social, Plant & Herb Sale, Derby Brunch On the River, Archaeology Day, Halloween Trick or Treat, and Old-Fashioned Family Holiday Festival. In 2022, Riverside added a weekly Farmers' Market to its calendar. It was held every Sunday from June through September. In 2022, we also added a well-received concert series to the calendar. Each monthly performance took place in our historic chapel.

RIVERSIDE, THE FARNSLEY-MOREMEN LANDING EXISTS TO PROMOTE, PRESERVE, RESTORE, AND INTERPRET HISTORIC FARM LIFE ON THE OHIO RIVER.

RIVERSIDE
THE FARNSLEY-MOREMEN LANDING

7410 Moorman Road, Louisville, Kentucky 40272
502.935.6809 ~ www.riverside-landing.org



RIVERSIDE
IS EXPANDING!





1



2



3



4

Riverside, the Farnsley-Moremen Landing is expanding its capacity to serve the community through a major renovation of its Visitors Center. Riverside’s Visitors Center was completed in 1993 when the property first opened to the public. The building has not been modified in any significant way since we opened. As you can imagine, our needs have changed since 1993, and our vision for the potential of the site has grown.

K. Norman Berry & Associates architects in collaboration with Riverside’s board, staff, and key stakeholders developed a phased approach to this ambitious expansion.

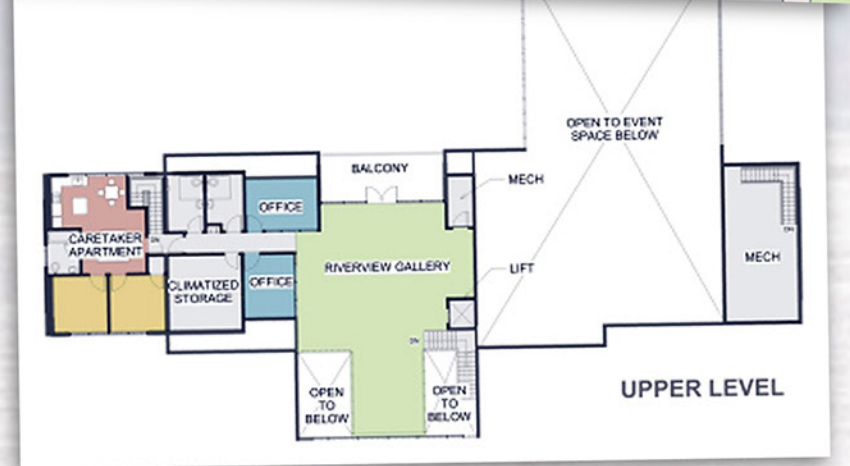
Each phase of the project opens the Visitors Center up to take advantage of its incredible setting on the banks of the Ohio River. The river is key to Riverside’s historical significance, and it is central to the site’s breathtaking beauty. With more formal outdoor activity spaces and more windows to reveal the scenic views, the expansion will offer visitors a greater appreciation for the location and its history.

This project will provide more museum exhibit space, classrooms, small meeting rooms, and a river view second floor gallery with a balcony. It will double the size of our largest program and gathering space. A brand new conveniently located kitchen will be added to the expanded multipurpose room, allowing us to use it as a teaching/workshop space as well as a catering kitchen for rentals.

Imagine purchasing fresh produce at Riverside’s seasonal farmers’ market and then being able to take a cooking class at the Visitors Center to learn how to use your nutritious locally grown vegetables in your home kitchen. Or, think about the school children who visit Riverside being able to do archaeology lab classes, hands-on history workshops, or mission-related art classes (i.e., quilting, knitting, carpentry) in our new classroom spaces!

We are thrilled to have a major jump start on this project with \$1 million allocation in Louisville Metro’s capital budget for 2022-2023!

While Louisville Metro’s backing gets Phase 1 of the project well underway, we know we need to raise another \$1.5 million to complete it as envisioned, and to move into Phase 2. The overall cost is estimated to be \$4.5 million.



Proposed changes in Phase 2 include: remodeling of upstairs of Visitors Center so that there is space for a river view gallery with balcony, additional office space, new climate-controlled museum collection storage space, and a renovated caretaker’s apartment. Alterations to the immediate environs of the Visitors Center will make the event court space more accessible from the pavilion and will provide service access to the new catering kitchen as well as a new location for staff parking that does not take away from the view of the river.

- 1: View of Ohio River at sunset from back of Visitors Center.
- 2: Current view of “river side” of Visitors Center.
- 3: Proposed new glassed addition to Visitors Center.
- 4: Proposed new event court space behind Visitors Center.