

## Then vs Now

The place we call Riverside, the Farnsley-Moremén Landing has gone by several names in the 200 years since it was first established as a farm and riverboat landing. The job of historians and archaeologists (we like to call ourselves "history detectives") is to figure out what life was like for people who lived here long ago and to share that information with the public. It is not just the name of the farm that has changed. Let's explore some of the many other things that have changed over time.



This is just one of several **washstands** that are in the house. In fact, there is one in every bedroom. The Farnsley-Moremén house has NEVER had an indoor kitchen or an indoor bathroom! Of course, that wasn't unusual for houses long ago. So, people would do "bathroom" things like wash their face and hands, brush their teeth and shave at a washstand like this one.

Where do you brush your teeth? \_\_\_\_\_

Do you think it would be fun to wash your face in your bedroom? YES or NO

If there was never a bathroom inside the brick house, where did people go to the restroom? Most of the time they would have used a small building built over a deep hole dug in the ground called an **outhouse** or a **privy**. But when it was dark, cold or stormy, people would use a **chamber pot**. There was one of these in every bedroom as well. Once the chamber pot had been used, you could cover it with the matching lid and then it would have to be taken out to the privy and emptied.

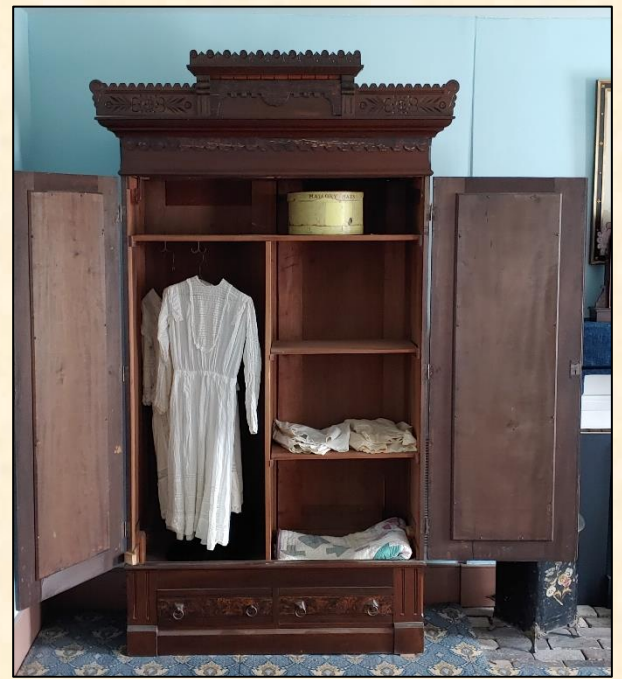


Where do you go to the bathroom in your house?  
\_\_\_\_\_

Do you think that the past might have been smellier than things are today? YES or NO

Would you want to be the person who had to carry the chamber pot down the stairs to the privy? YES or NO





This BIG piece of furniture is a **wardrobe**. Most old houses were built without closets in the bedrooms, so people needed a place to keep their clothes. Wardrobes were one place people could store their clothes. They had drawers on the bottom, shelves and hooks to hang your clothes from. We know who built this wardrobe because the tag from the furniture maker is still attached to the back over 120 years later!

Do you have a closet in your room? YES or NO

Do you hang your clothes on hooks or do you use something else? What do you use to hang your clothes? \_\_\_\_\_

Do you know the person who makes your furniture?  
YES or NO

On the desk in Gabriel's bedroom is this **quill pen** and **inkwell**. A quill pen was a feather that was sharpened at the end. It was then dipped in ink and used to write. Ink was made by crushing different natural materials like plants and berries. The walnuts that still grow at Riverside could have also been used to make ink. The ink was stored in a small, glass bottle called an **inkwell**.

What do you use to write with? \_\_\_\_\_

Do you think you would like to write a letter with a quill pen?  
YES or NO







The Farnsley-Moremen house did not have electricity until the 1930s. That means that for 100 years the people who lived there had to find some other way to see in the house at night. People used candles to see and they also used **lamps** like these. They were filled with fuel that burned easily and you would have to light them with a match. They were very dangerous and could cause a fire.

Do you have lamps in your house? YES or NO

How do you turn your lamp on? \_\_\_\_\_



Besides never having an indoor bathroom, the historic house also never had an indoor kitchen. We have reconstructed the outdoor kitchen that stood behind the house from 1837 (when the house was completed) until the middle of the 1870s. This is the **HUGE** fireplace in the kitchen. It is so big because it was not only used to keep the kitchen warm but to cook their food as well. It was the oven and the stove that the cook used to prepare the meals for the people who lived in the house. The metal crane allowed the cook to hang pots over the fire. Hot coals from the fire could be raked onto the wide brick hearth and used to cook with.

What does your stove look like? \_\_\_\_\_

Does your oven use gas or electricity to bake your food? \_\_\_\_\_



This strange looking thing is a **toe toaster**. It was used to make toast. The sliced bread would be inserted and then the toaster would have been pushed close to the fire. And when it was time to toast the other side, you could spin the toaster with your foot and warm the other side. To see one in action, watch this video.



<http://worthingtonhistory.org/2020tour/rooms/kitchen/>

How do you toast your bread? \_\_\_\_\_



This is the **dry sink** from Riverside's kitchen. Since the house and the kitchen did not have running water, all the water had to be drawn from a well and carried into the buildings. A dry sink is a cabinet that would have been used for all the same things we use a sink for today but it did not have a faucet or a drain. A basin holds the water and after it was used it would have to be carried out and emptied. Hauling water was hard work! In the early 1900s the Moremen family had a **windmill** installed. When the wind blows it turns the shaft and water is pumped out of the well. It made the job of getting water a little easier. We have had the original windmill restored and you can see it when you come and visit the site.



What do you do when you want to let the water out of your sink? \_\_\_\_\_

How does the water get into your house? \_\_\_\_\_

©Riverside, the Farnsley-Moremen Landing, 2020.